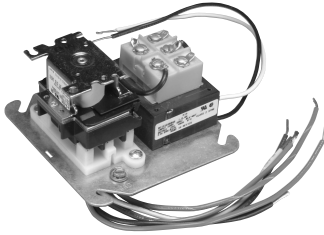
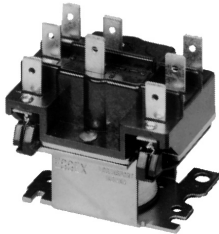


# FAN CONTROL CENTER RELAY & TRANSFORMER

White  
Rodgers



**90-112 THRU 90-130**  
U.L. Recognized



**90-340**  
Approximate Overall Dimensions  
2 1/8" x 1 7/8" x 2 1/4"

## 90-112 THRU 90-130 FAN CONTROL CENTER

Transformer and Relay Combination for Easy Installation on a 4" x 4" Junction Box

### FEATURES

- Line voltage connections pre-wired.
- Energy limiting class II transformer design.
- Color coded pre-stripped leads.
- Low voltage connections on terminal board.

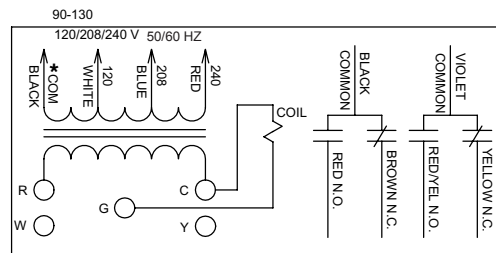
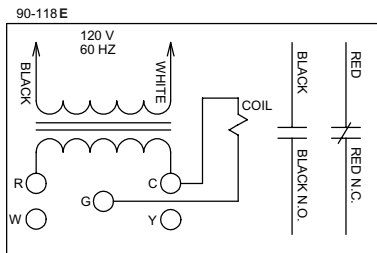
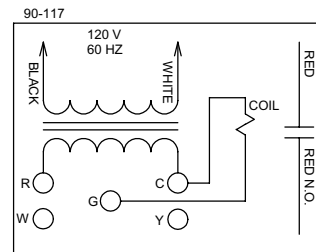
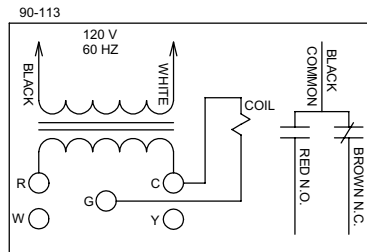
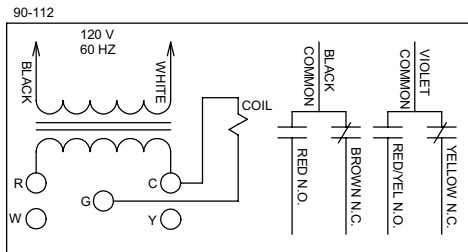
### SPECIFICATIONS

Agency . . . . . U.L. file number transformer E33334,  
fan center E73641

### REPLACEMENT RELAY FOR FAN CONTROL CENTER

Model Number	Replaces Relay On	Description
90-340	90-112, 90-113, 90-117 90-118E, 90-119, 90-130	DPDT Universal Plug-in Relay

Model Number	Mars Number	Transformer						Relay	Contact Ratings			
		Primary			Secondary				120 VAC (amps)		240 VAC (amps)	
		Voltage	Hz	Connections	Voltage	VA	Connections		Full Load	Locked Rotor	Full Load	Locked Rotor
90-112	24010	120	60	Color coded leads, pre-stripped	24V	40	Terminal board with 5 screw terminals	DPDT	13.8	82.8	6.9	41.4
90-113	24013	120	60	Color coded leads, pre-stripped	24V	40	Terminal board with 5 screw terminals	SPDT	13.8	82.8	6.9	41.4
90-117	24014	120	60	Color coded leads, pre-stripped	24V	40	Terminal board with 5 screw terminals	SPNO	13.8	82.8	6.9	41.4
90-118E	24012	120	60	Color coded leads, pre-stripped	24V	40	Terminal board with 5 screw terminals	SPNO/ SPNC	13.8	82.8	6.9	41.4
90-130	24010	120/ 208/240	50/60	Color coded leads, pre-stripped	24V	40	Terminal board with 5 screw terminals	DPDT	13.8	82.8	6.9	41.4



**Note:** Record the lead wire color with it's corresponding terminal for future reference. Unused transformer input leads must be insulated.

\* Black is common with respect to transformer winding, not external circuit.